



# InnovaSUMP

Interreg Europe



European Union  
European Regional  
Development Fund

## City and SUMP of Ravenna

**Nicola Scanferla**

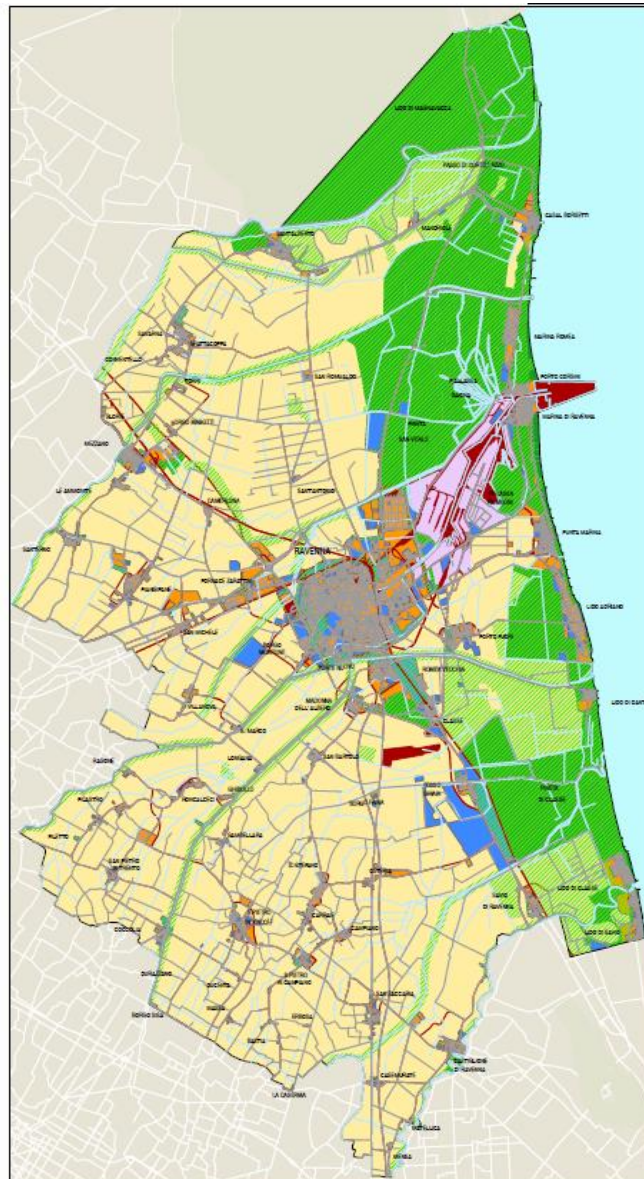
Head of Mobility Planning Unit, Municipality of Ravenna

[nscanferla@comune.ra.it](mailto:nscanferla@comune.ra.it)



19 April, 2017 | 1st Steering Committee Meeting, Nicosia, Cyprus

# Municipality of Ravenna



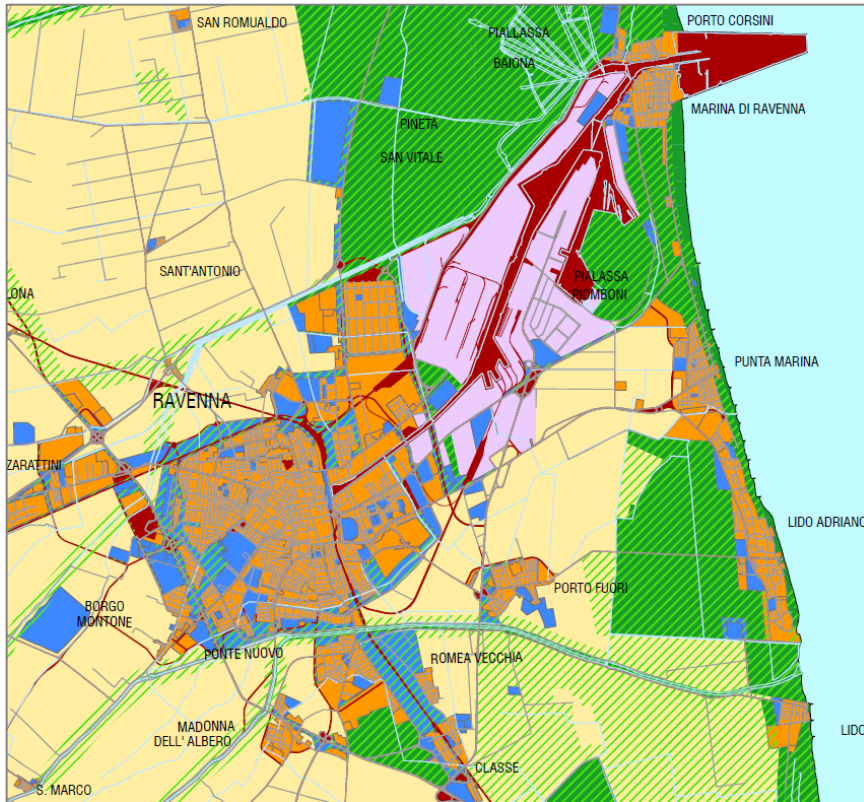
## Main territorial features

- Extension: 652,22 sq.Km,
- Population: 160.000 inhab.
- 38 km of coastline
- 3,7 m AMSL
- Road network: 1.620 Km
- 1 chief town and 64 small centers in the municipal territory

- Naturalistic area
- Rural area
- Port area
- Urban area
- Environmental system
- Equipment system
- Mobility system



# Municipality of Ravenna



## Main economical activities

- 8° Commercial port in Italy
- Chemical industrial district
- Cruise port, about 50.000 passengers in 2017
- Tourism:
  - 8 UNESCO monuments
  - 9 locations distributed over the coastline
  - 1 Natural Park





# RAVENNA MOBILITY POLICY

# Municipality of Ravenna



## Main mobility problems

- Important traffic flows during the summer
- Private car as a main mean of transport, also for short trips inside the city center
- Urban quality perception affected by the presence of cars
- Low efficiency of public transport due to the spreading of the small centers in the municipal territory
- High level of pollution
- Social exclusion related to limited accessibility
- Local economy affected by traffic and congestion

# SUMP: Aims and Topics



## Main Aims

Sustainable mobility as a competitive alternative to private car

Planning for people

Behavioural changes

Inclusivity

Public space and urban quality

Air quality

Less energy, less noise

Economic feasibility

## Main Topics

- Public transport
- Parking policy
- Pedestrian areas
- Safety
- Electric mobility
- Cruise port related mobility
- Urban freight
- Accessibility for disabled people
- Cycling
- Traffic calming
- New infrastructures



# SUMP: Implementation features



## Context analysis – Planning instruments

- Cycling Mobility Plan
  - Parking Policies Plan
  - Urban Road Safety Plan
  - Public School Transport Plan
- } General Urban Traffic Plan

*as well as*

- Noise zoning and related recovery plans
- Environmental profile and air quality study
- Study of the economic profile
- Demographic statistics
- Tourist flows data
- Freight flows data
- Traffic surveys and simulations using fixed and mobile stations

# SUMP: Process and Milestones



September 2015

Constitution of Work Group and analysis phase

December 2015

Negotiating table with other Public Authorities and Stakeholders

• January 2016

Starting of Strategic Environmental Assessment S.E.A.

• February 2016

Starting of Participatory Process

April 2016

Approbation of the «SUMP Policy lines for the Municipality of Ravenna and First Elaboration of Plan Scenario»

June 2016

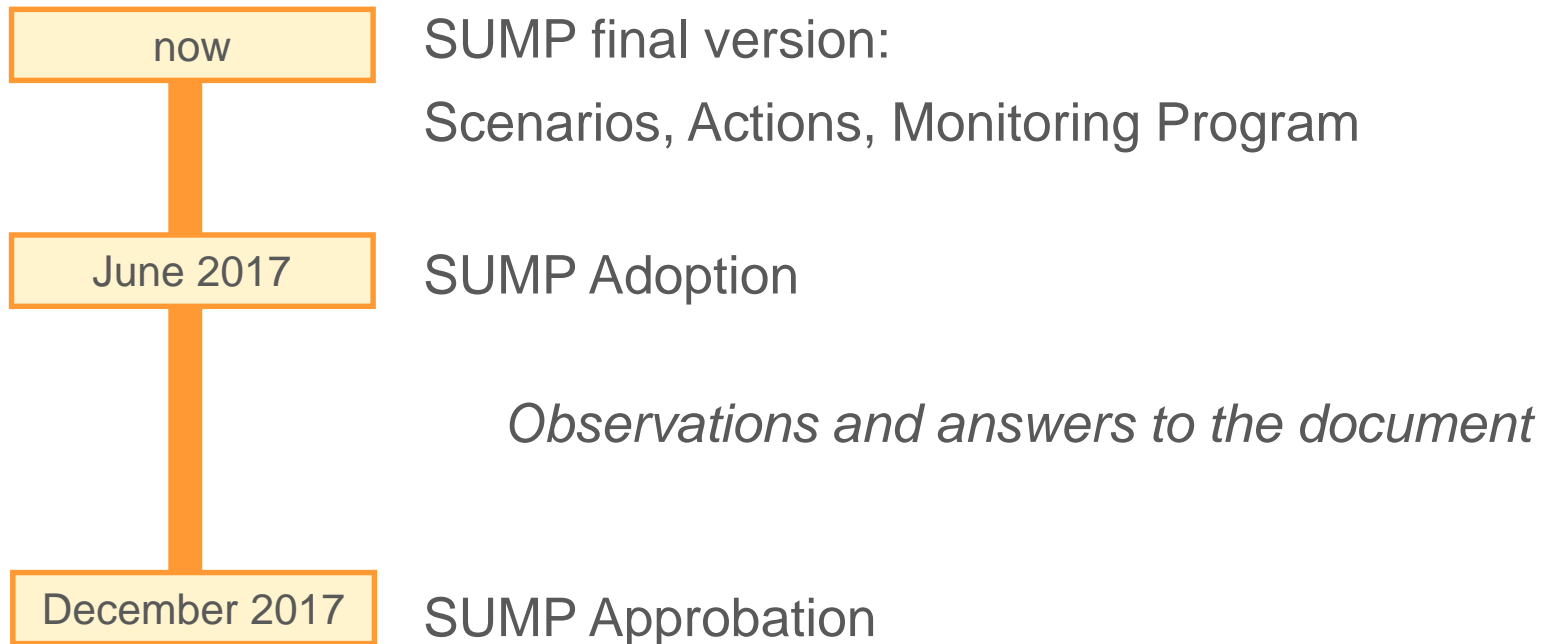
Closing of Participatory Process



# SUMP: Process and Milestones



# SUMP: Next steps





# SUMP: MAIN METHODOLOGICAL FOCUSES

# SUMP: Main Methodologic Focus



## 1\_ S.E.A. Strategic Environmental Assessment

Strategic environmental assessment (SEA) is a systematic, proactive and participative process that aims at ensuring that environmental aspects are given due consideration in planning and decision making above the project level, frequently referred to as 'strategic action' or 'policies, plans and programmes (PPPs)'. S.E.A. is mandatory in Emilia Romagna Region.

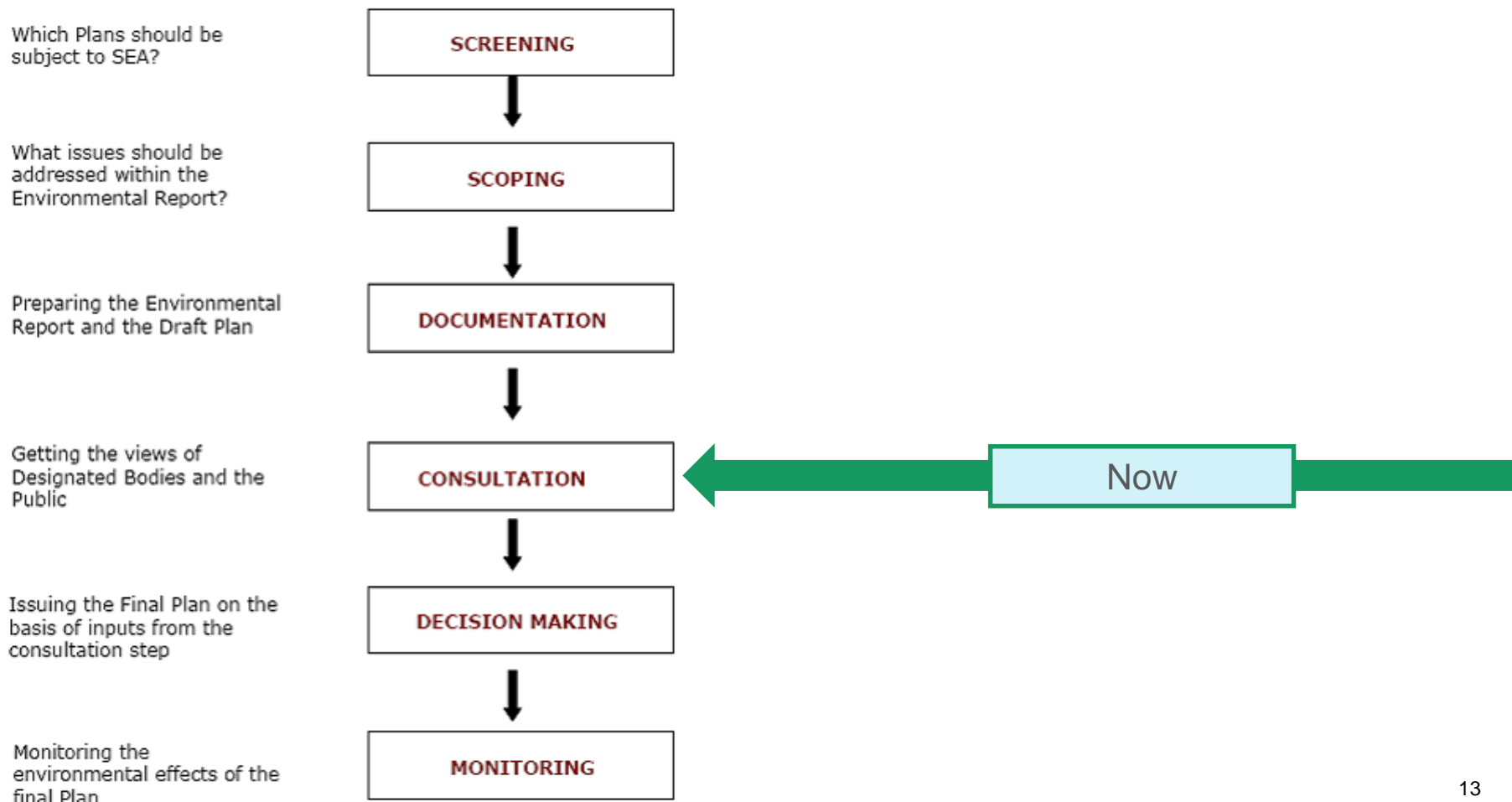
## 2\_ Participatory Process

Required by the Emilia Romagna Region with the aim purpose of promoting social cohesion and the identification of shared objectives concerning regional and local planning policies through the definition of a participatory system.



# SUMP: Focus on S.E.A <sup>1/3</sup>

The S.E.A. is a process that supports and acts «On and With» the Planning Phase



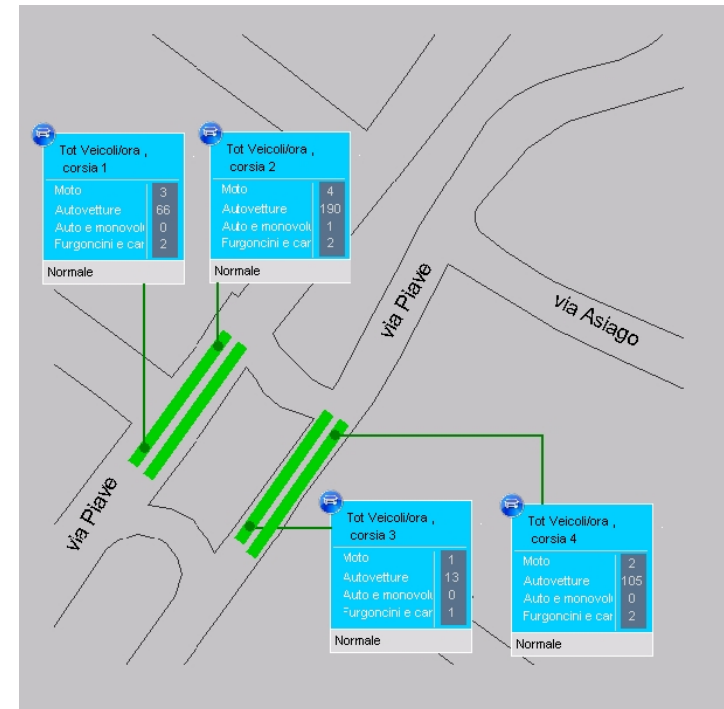




# SUMP: Focus on S.E.A <sup>2/3</sup>

## Main Preliminary Report Contents

- Methodological approach
- SUMP aims and actions
- Sump in the framework of planning
- Environmental sustainability aims
- Identification of environmental effects
- Indicators and tools for monitoring
- Coherence verification



e.g. of one methodological approach: traffic survey



# SUMP: Focus on Participation 1/4



## Participation process – Winter and Spring 2016

- 1 On line survey
- 7 Focus groups
- 5 Workshops
- 2 World Cafè
- 2 Specific events
- Social media and communication



# SUMP: Focus on Participation 2/4



## Participation process – Winter and Spring 2016

### 1 On line survey

- 460 forms
- Main interests: cyclability 81%, accessibility 79%, safety 77%

### 7 Focus Groups with 5 groups of citizens and stakeholders

- Schools and Educational institutions
- Stakeholders with economical activities in the city center
- University students (age<26)
- Elderly people (>65)
- Historic center inhabitants
- Suburbs inhabitants
- Coastline inhabitants

# SUMP: Focus on Participation 3/4



## Participation process – Winter and Spring 2016

### 5 Workshops

- Public Transport
- Limited traffic area and Restricted Traffic Zone
- Accessibility for all
- Public Health and Environment
- Walkability, cyclability and intermodality

### 2 World café

- Proposal on parking policies, cyclability and public transport



# SUMP: Focus on Participation 4/4



## Participation process – Winter and Spring 2016

### 2 Specific Events

#### A - “Is it better by car?”

Test with citizens: from suburban to the main square with 3 different means of transport: cars, bikes and bus.



#### B - “I would like to go...”

Public transport accessibility test with citizens: babies, elderly people and disabled.



# SUMP: Implementation features



Measures addressed to secure horizontal and vertical integration and participation of all main stakeholders

- Establishment of interdisciplinary work group (City Council's offices)
- Regional legislation on participation
- Establishment of negotiation table (Public Health Authority, Environmental Agency, Committes, etc.)
- Gioconda and Hackathon
- Agreements with Region Emilia Romagna
- Regional work group
- Ministerial work group
- Focus group by users' categories and Gioconda
- Thematic workshops
- World-café and bar-camp and final event for the delivery of the Participation Document



# InnovaSUMP

Interreg Europe



European Union  
European Regional  
Development Fund

# Thank you!



Questions welcome



*Projects media*